



2020 4780

2020 10

2020 11 12



2020 10

20 10 30

	500 t/d		500 t/d
1#	9000 kw•h		8500 kw•h
2#	10000 kw•h		9100 kw•h

	1#	DA001	1	1 / 1
	2#	DA002	2	
	1			
	1#	2		
	2#	3		
1				

2020 10 20 10 30		1		2020 10 21 ~11 3
	1#	2		
	2#	3		

		HJ 543-2009	0.0025mg/m ³	ZYG-X YQ-A-SY-029-1
		HJ 657-2013	0.2μg/m ³	ICAP RQ YQ-A-SY-035-1
		HJ 657-2013	0.02μg/m ³	ICAP RQ YQ-A-SY-035-1
		HJ 657-2013	0.2μg/m ³	ICAP RQ YQ-A-SY-035-1
		HJ 657-2013	0.1μg/m ³	ICAP RQ YQ-A-SY-035-1
		HJ 657-2013	0.008μg/m ³	ICAP RQ YQ-A-SY-035-1
		HJ 657-2013	0.2μg/m ³	ICAP RQ YQ-A-SY-035-1
		HJ 657-2013	0.3μg/m ³	ICAP RQ YQ-A-SY-035-1
		HJ 657-2013	0.07μg/m ³	ICAP RQ YQ-A-SY-035-1
		HJ 657-2013	0.008μg/m ³	ICAP RQ YQ-A-SY-035-1
		HJ 657-2013	0.008μg/m ³	ICAP RQ YQ-A-SY-035-1
		HJ 702-2014	40mL 0.02μg/L	AFS-8220 YQ-A-SY-002

		22 HJ 781-2016	0.01mg/L	OPTIMA8300-DEMO YQ-A-SY-018
		22 HJ 781-2016	0.01mg/L	OPTIMA8300-DEMO YQ-A-SY-018
		22 HJ 781-2016	0.03mg/L	OPTIMA8300-DEMO YQ-A-SY-018
		22 HJ 781-2016	0.01mg/L	OPTIMA8300-DEMO YQ-A-SY-018
		22 HJ 781-2016	0.004mg/L	OPTIMA8300-DEMO YQ-A-SY-018
		22 HJ 781-2016	0.06mg/L	OPTIMA8300-DEMO YQ-A-SY-018
		22 HJ 781-2016	0.02mg/L	OPTIMA8300-DEMO YQ-A-SY-018
		HJ 702-2014	40mL 0.10μg/L	AFS-8220 YQ-A-SY-002
		22 HJ 781-2016	0.01mg/L	OPTIMA8300-DEMO YQ-A-SY-018
		GB/T 15555.4-1995	0.004mg/L	SP-721 E YQ-A-SY-027-1

		HJ 702-2014	0.10 μ g/L	AFS-8220 YQ-A-SY-002
		CJ/T 221-2005	/	BSA224S YQ-A-SY-019
		HJ 1024-2019	/	BSA224S YQ-A-SY-019

1

2

3

4

5

6

1

			147	/	/
		m/s	17.4	/	/
		%	8.7	/	/
		(m ³ /h)	83528	/	/
		(mg/m ³)	0.004	/	/
		(mg/m ³)	0.003	0.05	
		mg/m ³	0.0000188	/	/
		mg/m ³	0.0000230	/	/
		Cd+Tl mg/m ³	0.0000418	/	/
		Cd+Tl mg/m ³	0.0000340	0.1	
		mg/m ³	0.0000831	/	/
		mg/m ³	ND	/	/
		mg/m ³	0.00557	/	/
		mg/m ³	0.00182	/	/
		mg/m ³	0.0000370	/	/
		mg/m ³	0.0644	/	/
		mg/m ³	0.00183	/	/
		mg/m ³	0.000542	/	/
		Sb+As+Pb+Cr+Co+Cu+Mn+Ni mg/m ³	0.0744	/	/
		Sb+As+Pb+Cr+Co+Cu+Mn+Ni mg/m ³	0.0605	1.0	


2020
10 301#
DA001
1

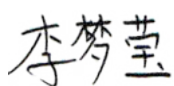
2020 2#
10 20

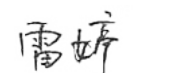
2

mg/L

2020 10 20	1			0.00050	0.05	
				ND	40	
				ND	100	
				ND	0.25	
				ND	0.15	
				ND	0.02	
				1.12	25	
				ND	0.5	
				0.00099	0.3	
				ND	4.5	
				ND	1.5	
				0.00072	0.1	
				%	18.3	30
	1# 2	%	1.8	5		
	2# 3	%	2.4	5		
1	ND					
2		1		GB16889-2008	6.3	
1						
3				GB18485-2014	1	


 2020.11.12


 2020.11.12


 2020.11.12

1

	ND ND	35%	35%	
	0.79mg/L 0.85mg/L	3.7%	35%	
	"ND"			

2

	ND	0.0025mg/m ³	
	ND	0.2µg/m ³	
	ND	0.02µg/m ³	
	ND	0.2µg/m ³	
	ND	0.1µg/m ³	
	ND	0.008µg/m ³	
	ND	0.2µg/m ³	
	ND	0.3µg/m ³	
	ND	0.07µg/m ³	
	ND	0.008µg/m ³	
	1 2 "ND"		

2

	202045	5.06µg/L	5.15±0.42µg/L
	200935	0.251mg/L	0.255±0.017mg/L
	200935	0.344mg/L	0.339±0.025mg/L

3

	/				
	0.800µg/L	0.805µg/L	0.6%	10%	
	200µg/L	204.367µg/L	2.2%	10%	
	200µg/L	195.771µg/L	2.1%	10%	
	200µg/L	207.371µg/L	3.7%	10%	
	200µg/L	199.592µg/L	0.2%	10%	
	200µg/L	211.655µg/L	5.8%	10%	
	200µg/L	202.32µg/L	1.2%	10%	
	200µg/L	197.417µg/L	1.3%	10%	
	200µg/L	192.203µg/L	3.9%	10%	
	200µg/L	206.671µg/L	3.3%	10%	
	200µg/L	208.038µg/L	4.0%	10%	

4

	0 0.0050µg 0.0050µg	100.0%	70~120%	
	0 0.0050µg 0.0047µg	94.0%	70~120%	

2



1



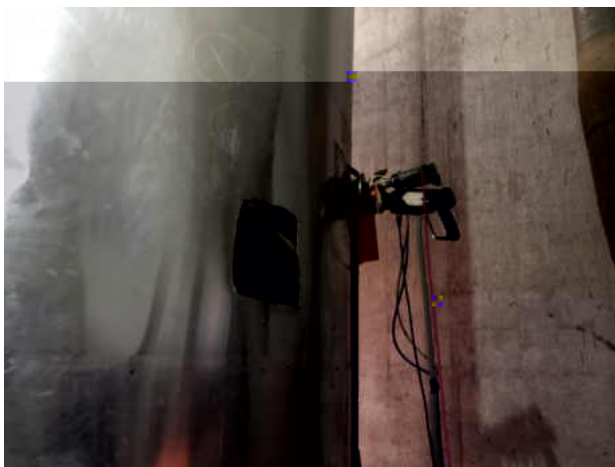
1# 2



2# 3



1# DA001 1



2# DA002 2
